



In 2016, consultants found that about **67% of Emory's landfill bin contents were compostable material.**



They found that over **20% of Emory's landfill bin contents were recyclable.**



Less than **10% of Emory's landfill bin contents actually belong in the landfill**

TOGETHER, WE CAN CREATE A POST-LANDFILL FUTURE



ZERO LANDFILL WASTE: **RECYCLING & COMPOSTING** AT EMORY UNIVERSITY



EMORY RECYCLES

For questions about bins and operational issues such as collection, contact Emory Auxiliary Services at 404.727.9275 or deena.keeler@emory.edu.

For questions regarding the waste policy, sustainability goals, or if you want to certify your event, office or lab for sustainability, visit sustainability.emory.edu or contact Emory's Office of Sustainability Initiatives at 404.727.9916 or emorysustainability@emory.edu.

Research laboratories should follow recycling guidance published at sustainability.emory.edu/greenlabs.

Electronic waste should be recycled following the protocols published at it.emory.edu/electronicwaste



f t @EmoryGreen

ZERO LANDFILL WASTE EMORY

**Emory Sustainability Vision goal:
Divert 95% of waste from landfills by 2025**

Did you know?

There is no away when you throw away.

- Landfills have negative social, economic, and environmental impacts on neighboring lower-income, historically disadvantaged communities.
- Landfills contribute to greenhouse gas emissions and can leak harmful toxins into the surrounding environment.

How can we help?

- Sort with care.
- Composting food waste enhances carbon sequestration and puts nutrients back into soils to grow more food and for landscaping.
- Recycling turns waste into new materials and grows the American economy.

KNOW WHERE TO THROW

All university buildings have bins to collect 5 standard streams.



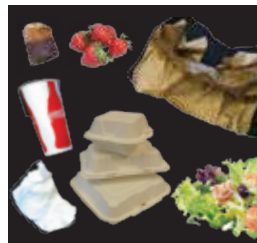
Outside, landfill bins were removed and replaced with green compost and blue recycle bins.



Stations for hard-to-recycle items are placed inside many buildings on campus.



COMPOST



All food.
Compost bin contents are taken to a facility and broken down into soil amendments.

- Meat & dairy products
- Cooked food and all food leftovers
- Soiled paper products like coffee and drink cups, paper to-go containers, and napkins
- Wood coffee stirrers
- Used tissues
- Natural/cotton fiber
- Fur/hair/feathers and other animal products

Don't contaminate with anything plastic, metal or Styrofoam even if there is still food on or in the package.

PLASTICS & METALS



DEFAULT to this stream

Contents of Plastics/Metals bins are taken to a recycling facility and turned into more plastic bottles, metal cans, or new plastic products.

Some food residue on packaging and containers is OK.

Residues burn off in the process of recycling with energy captured to run the recycling facility.

- Mixed materials like pens, markers, sponges, bubble-lined envelopes, plastic-lined wrappers, binder clips, staplers, push pins, and other office supplies
- All metal cans, metal foil
- Plastic bottles, plastic clam shells, and plastic trays
- Snack wrappers, chip bags, cereal bags
- Plastic zip bags, plastic wrap, grocery bags tied into a knot
- Bubble wrap, tape, labels
- Paper clips, magnets
- Dental floss, sticker paper, mylar balloons and wrappers, K-cups (after placing contents in the compost bin)

MIXED PAPER



Any paper that is NOT white paper.
Default to this stream for all paper when uncertain.

Take large cardboard to the nearest hard-to-recycle collection station. No need to remove tape, labels, or staples.

- Newspapers, magazines, books and phone books
- Paper file folders
- Colored paper, receipt paper, card stock, glossy paper
- Waxed paper board like frozen foods boxes, milk cartons, etc.
- Small cardboard

WHITE PAPER



A valuable commodity, therefore important to keep only white paper:

- Printer paper
- Notebook paper
- Envelopes with or without windows

Don't contaminate with colored paper, cardboard, newsprint or other mixed paper.

HARD TO RECYCLE



Hard to Recycle Materials

Many Emory buildings have collection stations. Your nearest station is listed on an orange label at an interior recycle and compost station.

- Glass – bottles and jars of any color
- CFL & LED light bulbs
- All types of batteries
- Clean Styrofoam (not used for food)
- Aerosol cans of any type (air freshener, duster, deodorant, bug spray, etc.)
- Ink and toner cartridges of any type

Default to **PLASTICS/METALS** bin when in doubt

LANDFILL



Emory can recycle or compost most items. Please only place the following in landfill bins:

- Soiled Styrofoam food containers
 - Used baby diapers
 - Cat litter and dog waste
 - Used sharps in a rigid cardboard container
- Clean Styrofoam from packaging is collected in the nearest hard-to-recycle station.